

# Pre-season Checks

## Rapid



Where farming starts

VÄDERSTAD



# Maintaining your Väderstad machine is always a good investment

Väderstad is known to farmers all over the world for innovation and high-quality products. But even high-quality products need service and support.

Väderstad Service is represented in over 40 countries, either by importers, our fully owned subsidiaries or at more than 1000 dealer locations worldwide. Since we support well over 70,000 machines worldwide, we always stay close to our customers so that we can provide quick and competent support – whenever it's needed. If you experience issues with your Väderstad machine, please turn to your local dealer where their fully qualified service engineers will be able to assist you.

## Contents

Introduction .....	1
How to check your machine .....	3
Maintenance introduction.....	4
Rapid A.....	6
Rapid 300-400C/S .....	8
Väderstad Quickstart guides.....	11
Online documentation .....	12



## How to check your machine

Inspect for optimal performance, trouble-free operation and identify issues before they turn into costly repairs. You should always check your machine before you start the next season. For details about checkpoints and service intervals please read the Instruction manuals maintenance and service section. Always lubricate according to the lubrication chart.

### Key points

- Machines need to be fully function checked to ensure they are up to the job prior to your planting season. Your dealer can offer a full check up service and simulate the radar even in your workshop. Please ask for details.
- Check the serial number on the chassis to be sure you get the correct parts from your dealer.

If you experience a break down during an intense working period, the time your machine is down causes frustration and costs money. By carrying out proactive monitoring and preventive maintenance, a great step is taken to avoid situations like this.

After each season thoroughly wash the machine and for seed drills/planters clean all parts in the seed feed systems. Check the status of wearing parts and follow the greasing and other maintenance intervals given in the instruction manual. During the season, regularly re-tighten joints and inspect for wear, excessive wear on joints may be an indication that the machine setup is not optimal.

# Maintenance

Your Väderstad machine is a high-quality high-tech machine. Like all technical equipment regular maintenance and good care is the basis for a trouble-free operation, and a good investment for the future.



## Clean

- Wash the machine with a high pressure washer.
- For all drills and planters clean inside the seed feed units and distributor heads with compressed air.
- Clean electrical components with compressed air or by wiping them with a slightly dampened cloth.
- Pay special attention to sections that are affected by fertiliser products.
- Never rinse the bearings with a high-pressure water supply! It is important to grease the bearings after washing in order to remove any water that has remained behind.

## Lubricate

It is essential that the machine is lubricated according to the intervals specified in the lubrication chart.

Beside lubrication intervals:

- Always lubricate prior to and after winter storage.
- Always lubricate after washing with high-pressure equipment.

## Inspect

- Inspect the wear parts. After a certain point of wear the parts are no longer bringing the result you expect from your Väderstad machine.
- Regularly check that screws and bolts are tightly fitted.
- Inspect for wear in the joints that connect frame sections and hydraulic cylinder mountings. Especially on machines for tillage, excessive wear on joints and hydraulic cylinder mountings may be an indication that machine setup is not optimal. Information to reset to a basic setting can be found in the machine's quick start instructions.



**1 Clean hydraulic tractor couplings**  
Make sure that couplings are clean and check the colour markings. Colour marked aluminium couplings together with graphical stickers are available to retrofit onto older models.

**2 Re-tighten packer wheel bolts and check tyre pressure**  
Dimension 190/95-15 = 220 Nm/1.5 bar .  
Dimension 700/50-26.5 = 550 Nm/1.3 bar  
(Rapid A 600-800C/J).

Always follow your Rapid instructions on how to inflate tyres and be sure to inflate all tyres to the same air pressure.

**3 Clean and calibrate the radar before operating**  
Ensure that the radar's operating radius is clear from disruptive elements such as hoses or cables. Consider mounting a mudguard behind the packer wheels, to prevent dirt splash and disturbing the radar. A mudguard for the pivot packer is available from Parts.  
**Art. No: 7100480** for Rapid A 400-800S

**4 Order new discs in time**  
Minimum recommended measurement:  
380mm on System Disc 410mm.  
400mm on System Disc Aggressive 450mm.

**5 Adjust or order new seed coulters in time**  
When the machine is lowered to the ground resting on the seed discs, the coulter should not touch the ground. Move the coulter up one hole if required. The coulter must never reach below the disc level!  
*Note! If the coulter shows severe loss of material, consider changing it.*

**6 Order new seed discs from 390-370mm & replace at 355mm**  
When the cut-outs lose their distinctness the aggressiveness of the disc decreases, reducing the intensity of soil cultivation. During demanding conditions, it can lead to discs stopping. Use the multitool to measure the disc condition.

**7 Re-tighten wheel bolts (brakes) and check tyre pressure**  
Wheel bolts (wheel with brakes) = 220 Nm.  
Tyre pressure 190/95-15: Rapid 300 - 400 = 1.5 bar.  
Rapid 600 - 800 = 2.8 bar.  
Always follow your Rapid instructions on how to inflate tyres and be sure to inflate all tyres to the same air pressure.

**8 Check that the wheel scrapers are tight and correctly adjusted**  
The scrapers can be adjusted in the vertical and horizontal position. Depending on circumstances the optimal position may vary. The distance between scraper and wheel must never be less than 5mm.

**9 Check condition of the seed meter(s) / seed feed wheels**  
Clean interior and check for wear or damage to the plastic and rubber parts. It is particularly important to ensure that additives are not deposited in the flutes, reducing their volume. The crank should rotate easily. Check that the cell wheel flaps do not seize but lie against the bottom of the track when setting from zero and upwards. Check that the brushes for oil seed rape rotate easily on their shafts. The brushes must not be lubricated.

**10 Check seed hose conditions**  
Make sure there are no cracks or other damage to the seed hoses. Check that the connection between hose and adjacent parts are secure. Check that all hoses are running smooth without any sharp bends during the folding process.

**11 Clean the seed distributor head outlets and moving parts involved in tramlining**  
The outlets must be free from seed or packaging remnants. Hatches that close outlets when tramlining is activated must move easily.

**Safety!**  
Carefully read the safety instructions in the instruction manual before any service or maintenance work is carried out. Lubricate according to schedule.



Rapid A 800S

## Rapid 300-400C/S

### 1 Clean hydraulic tractor couplings

Make sure that couplings are clean and check the colour markings. Colour marked aluminium couplings together with graphical stickers are available to retrofit onto older models.

### 2 Re-tighten packer wheel bolts and check tyre pressure

Dimension 190/95-15 = 220 Nm/1.5 bar.

Always follow your Rapid instructions on how to inflate tyres and be sure to inflate all tyres to the same air pressure.

### 3 Clean and calibrate the radar before operating

Ensure that the radar's operating radius is clear from disruptive elements such as hoses or cables. Consider mounting a mudguard behind the packer wheels, to prevent dirt splash and disturbing the radar. A mudguard for the pivot packer is available from Parts.

**Art. No: 7101230** for Rapid 300-400C/S

### 4 Order new discs in time

Minimum recommended measurement:  
380mm on System Disc 410mm.  
400mm on System Disc Aggressive 450mm.

### 5 Adjust or order new seed coulters in time

When the machine is lowered to the ground resting on the seed discs, the coulter should not touch the ground. Move the coulter up one hole if required. The coulter must never reach below the disc level!

*Note! If the coulter shows severe loss of material, consider changing it.*

### 6 Order new seed discs from 390-370mm & replace at 355mm

When the cut-outs lose their distinctness the aggressiveness of the disc decreases, reducing the intensity of soil cultivation. During demanding conditions, it can lead to discs stopping. Use the multitool to measure the disc condition.

### 7 Re-tighten wheel bolts (brakes) and check tyre pressure

Wheel bolts (wheel with brakes) = 220 Nm.  
Tyre pressure 190/95-15: Rapid 300 – 400 = 1.5 bar.  
Always follow your Rapid instructions on how to inflate tyres and be sure to inflate all tyres to the same air pressure.

### 8 Check that the wheel scrapers are tight and correctly adjusted

The scrapers can be adjusted in the vertical and horizontal position. Depending on circumstances the optimal position may vary. The distance between scraper and wheel must never be less than 5mm.

### 9 Check condition of the seed meter(s) / seed feed wheels

Clean the seed feed wheels, and check for cracks and damage. Make a function control of the tramlining couplings.

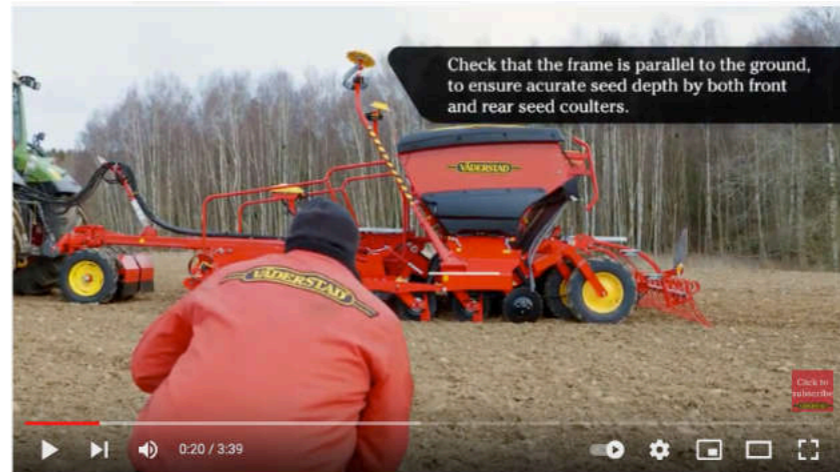
### 10 Check seed hose conditions

Make sure there are no cracks or other damage to the seed hoses. Check that the connection between hose and adjacent parts are secure.

### Safety!

Carefully read the safety instructions in the instruction manual before any service or maintenance work is carried out. Lubricate according to schedule.



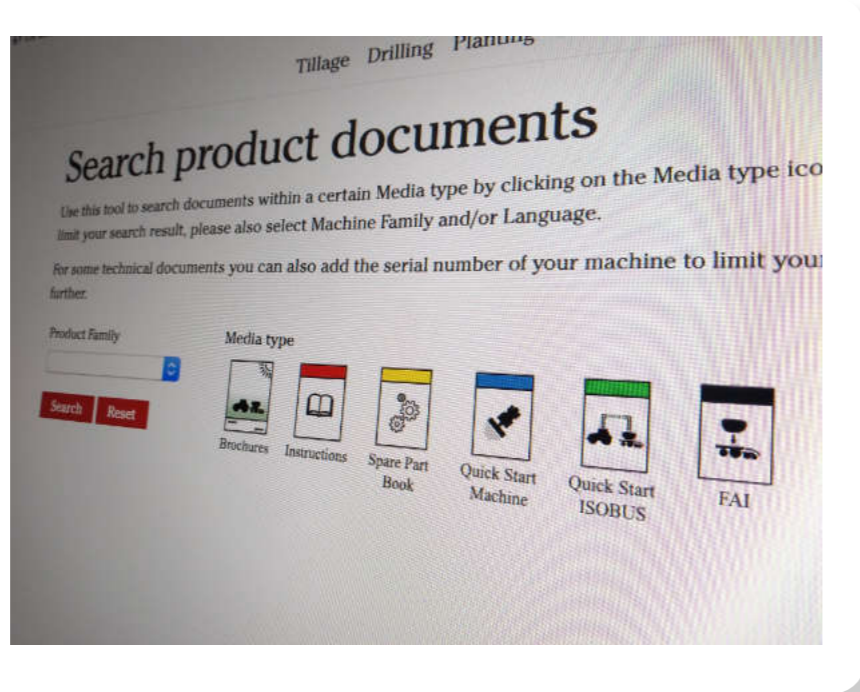


QuickStart - Basic settings - Väderstad Rapid 300-400C/S

## Quickstart guides

[www.vaderstad.com/uk/service--parts/quickstart-guides](http://www.vaderstad.com/uk/service--parts/quickstart-guides)

Available on the Väderstad website, the Väderstad QuickStart guides tell you everything you need to know to correctly setup and start using your Rapid drill.



## Search product documents

[www.vaderstad.com/uk/products/search-product-documents](http://www.vaderstad.com/uk/products/search-product-documents)

Available on the Väderstad website, the document search page provides the ability for you to search for documents related to your machine. To limit your search result even further for technical documents, you can even add the serial number of your particular Rapid.







**VÄDERSTAD**

Where farming starts